

# Welcome to Springhouse Middle School

## 6<sup>th</sup> Grade Parents' Night



*Home of the Timberwolves*

# **6<sup>th</sup> Grade Parents' Night Agenda**

**Springhouse Middle School**

**Wednesday, January 8, 2020**

**7:00 p.m.**

**Welcome and Introduction**

**Dr. Minotti**

**7<sup>th</sup> Grade Program Overview**

**Mrs. Steigerwalt**

**Math Selection**

**Mrs. Plattner**

**Program of Studies / Online Course Selection**

**Mrs. Jenkins**

**Music Selection**

**Mrs. Reilly**

**Mr. Bauer**

**Mrs. Sliver**

**Health Requirements**

**Mrs. Troutman**

**Activities and Athletics**

**Mr. Bartman**

**Mrs. Thompson**

Visit us online at  
<https://sms.parklandsd.org/>



## SPRINGHOUSE MIDDLE SCHOOL

*Educating for Success, Inspiring Excellence*

 District  Select Your School  Clever  Intranet 

About

Teams

Announcements

Students

Parents

Staff

Directory



**Get Social by following us**  
**on Twitter: @SpringhouseMS**  
**on Facebook: Springhouse Middle School**  
**on Instagram: springhousemiddleschool**

# Stay Connected with Parent Resources: Schoology and Home Access



**SPRINGHOUSE MIDDLE SCHOOL**

*Educating for Success, Inspiring Excellence*

🏠 District Select Your School ▼ Clever Intr

About

Teams

Announcements

Students

Parents

Staff

Directory

Access Center

Middle School Links

PTO

Parent Resources

Schoology Parent Portal

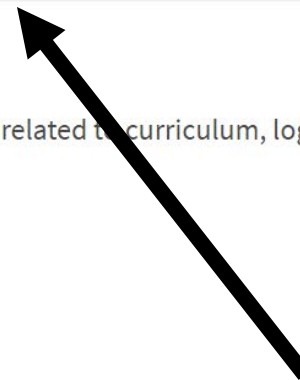
## Parent Resources

[CLEVER Portal login instructions](#) – for all applications related to curriculum, log into Clever

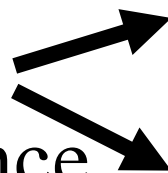
[Student Google Apps login instructions from home](#)

[Volunteer Policy and Information](#)

[SCHOOLGY Portal login instructions](#)



View Grades  
and  
Attendance



## Home Access Center

- Home Access Center
- Parent Home Access Center Information
- For HAC support, contact: [hac@parklandsd.org](mailto:hac@parklandsd.org)

[Schoology Parent Portal](#)

## Manuals

- Elementary School Student Handbook
- Middle School Student Handbook
- High School Course Catalog
- High School Course Registration Forms
- High School Student Handbook





**Educating The Whole Child**

# PARKLAND SCHOOL DISTRICT

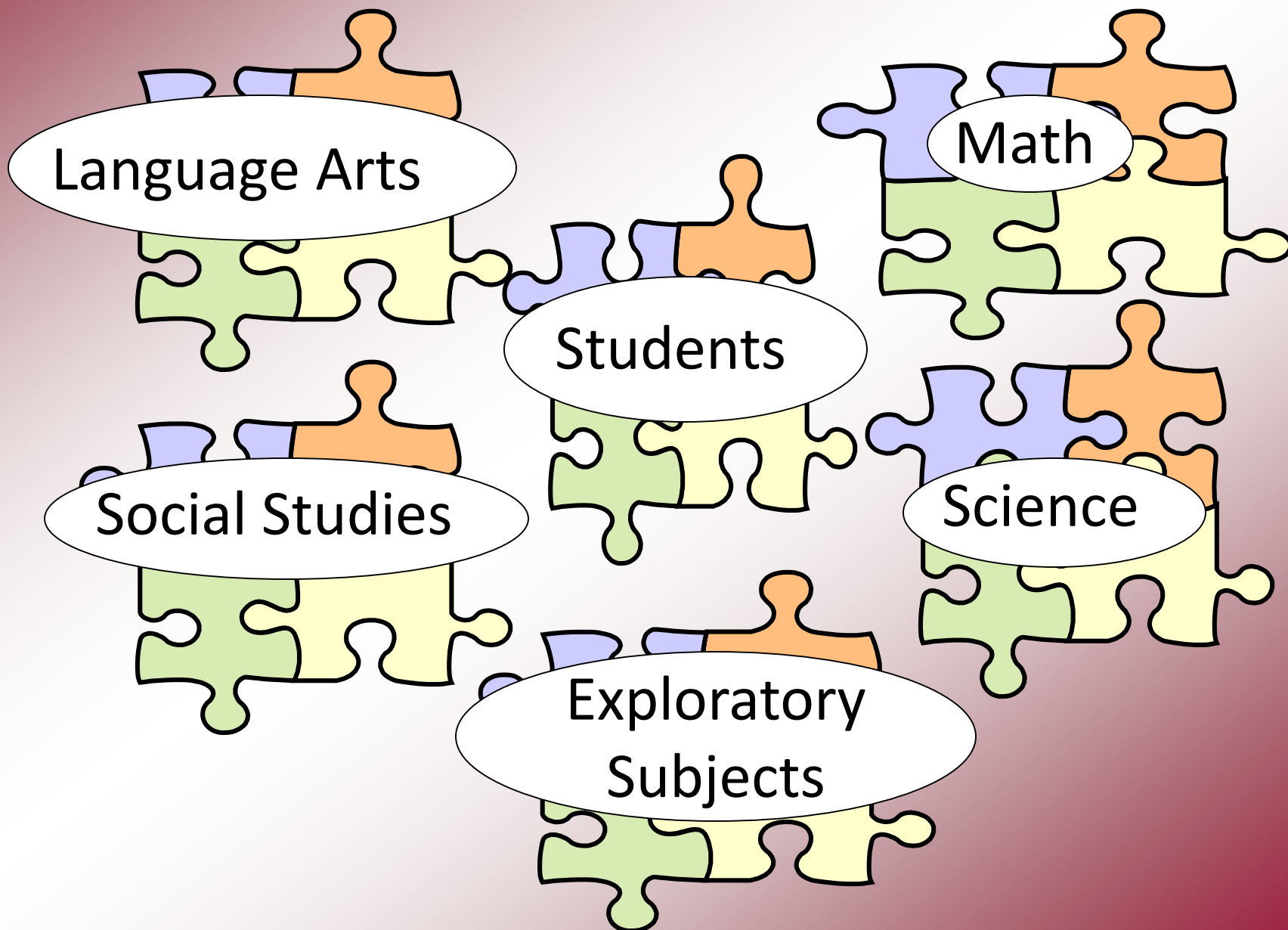
## MIDDLE SCHOOL MISSION STATEMENT

*The Parkland Middle School is a collaborative effort of staff, students, and community which together cultivates the uniqueness of adolescents and addresses individual abilities, needs, talents, and interests through a challenging, integrated curriculum in a nurturing and safe environment.*





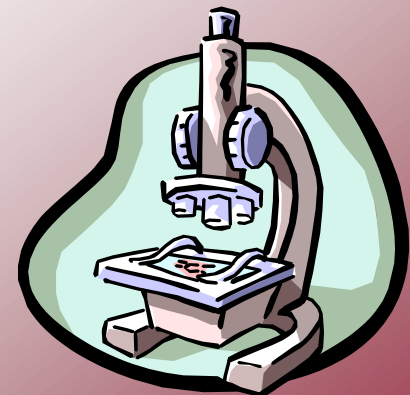
# Teaming



# 7<sup>th</sup> Grade Program

## Major Subjects

- Language Arts (GHP option)
- Social Studies (GHP option)
- Science (GHP option)
- Mathematics
  - Math Seminar 7
  - Pre-Algebra
  - Algebra 1





# Critical Factors that Affect Student Decisions

## *Consider All Available Information*



- ✓ **Individual Strengths and Needs**
- ✓ **Previous and Present Performance**
- ✓ **Study Skills and Work Ethic**
- ✓ **Future Goals and Direction**
- ✓ **Current and Planned Activities**
- ✓ **Recommendations**

# Math Selections

- Math Seminar 7
- Pre-Algebra
- Keystone Algebra 1



# Teacher Recommendations

Teacher recommendations are based on:

1. Algebra I Placement Test
2. Study Island Benchmark
3. Test/Quiz Average

The recommendation is the best way to determine how well your child would do in Algebra I and on the Keystone.

# Parkland School District Mathematics Assessment

## **GRADE 6 ALGEBRA PLACEMENT TEST**

- ✓ **Measures a Student's Knowledge Base and Readiness for Algebra Instruction**
- ✓ **Serves as a Predictor of Success for Various Levels of Algebra Instruction**
- ✓ **Individual Student Percentage Score**



# Pre- Algebra Curriculum

- A. Real Numbers and Integer Operations**
- B. Variables and Expressions**
- C. Solving Linear Equations and Inequalities**
- D. Proportional Reasoning and Percentages**
- E. Graphing on the Coordinate Plane**
- F. Data Analysis and Probability**
- G. Geometry**

# Keystone Algebra I Pre-Course Skills

**Students entering Algebra I should have mastery of the following topics:**

- Order of Operations with Rational Numbers
- Classification of numbers (Real, Natural, Whole, Integer, Rational, Irrational)
- Algebraic Properties of Real Numbers
- Variables and Expressions: Combining like terms, Distributive Property
- Solving multi-step equations
- Graphing on a coordinate plane
- GCF and LCM of monomials
- Scientific and standard notation

**\*\*Algebra I only preps for 50% of what is on the 7<sup>th</sup> grade PSSA\*\***

# 7th Grade Program of Studies Related Arts

- **Exploratory Cycle**

**Family Consumer Science**

**Technology Education**

**Music/Band/Chorus/Orchestra**

**Art**

- **Phys. Ed./Health**

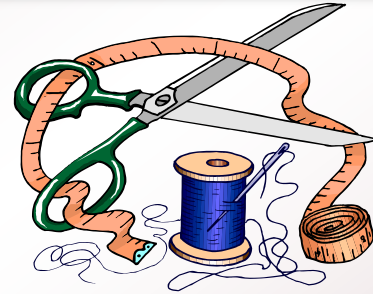
- **Information Technology**

- **Study Skills/Guidance/Media Center**

- **Intro. to World Languages/Reading Seminar**

- **Reading Preparation**

- **Mathematics Preparation**



# Lehigh County Career Pathways

K-5  
Career  
Awareness



6-8  
Career  
Exploration



**Lehigh**  
**County**  
Public  
Schools

Choose a career pathway  
from one of the following clusters:

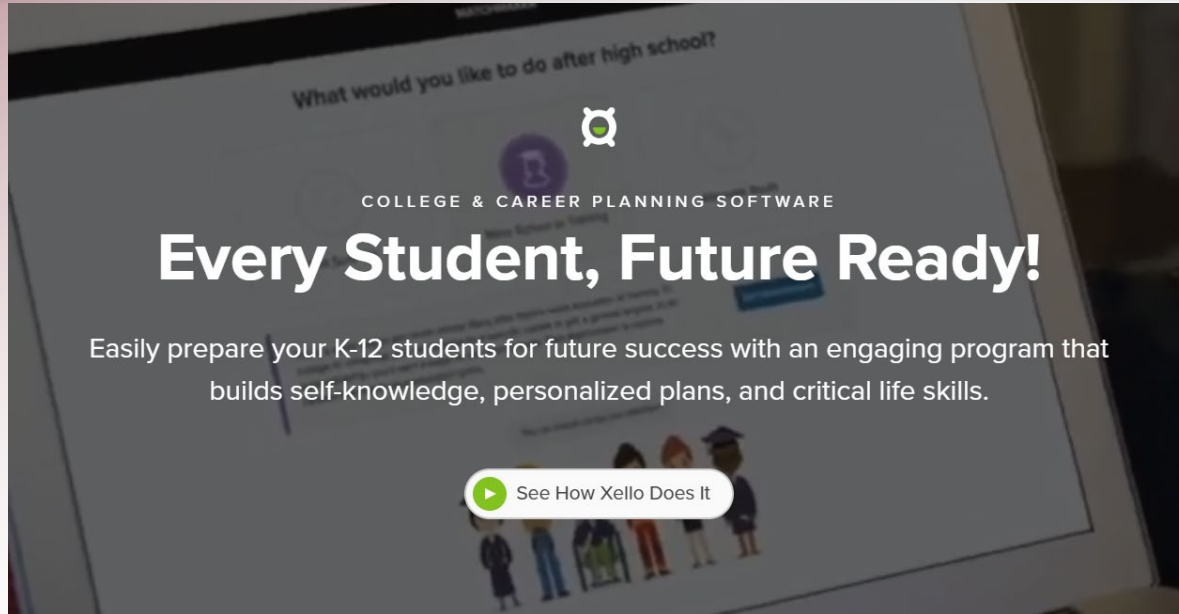
- **Arts & Humanities**
- **Business and Communications**
- **Engineering/Industrial**
- **Health & Human Services**



# Xello

(Formerly Career Cruising)

**xello.world/en/**



- **This web-based career exploration site is introduced in 7<sup>th</sup> grade guidance classes!**
- **Interest Inventory, School Searches, Hundreds of Careers to Explore, Scholarship Information and More...!**

# Online Course Recommendations

- Teachers enter course recommendations based on the child's academic performance during the first three marking periods of the 2019-2020 school year.
- Home Access will **ONLY** be open for parents **February 11-20** to review the recommendations.
  - If you would like your child to be scheduled for those courses, click **SAVE** on the *Select a Course screen*.
  - If after considering the teacher recommendations in addition to your child's abilities, you wish to choose a different course, you will need to remove the original √ from the request column and place a √ in the request column of the course you would to select. Then click **SAVE** on the *Select a Course screen*.
- On **February 21**, any student whose parent has not completed the registration process will automatically be scheduled for the teacher recommended courses.

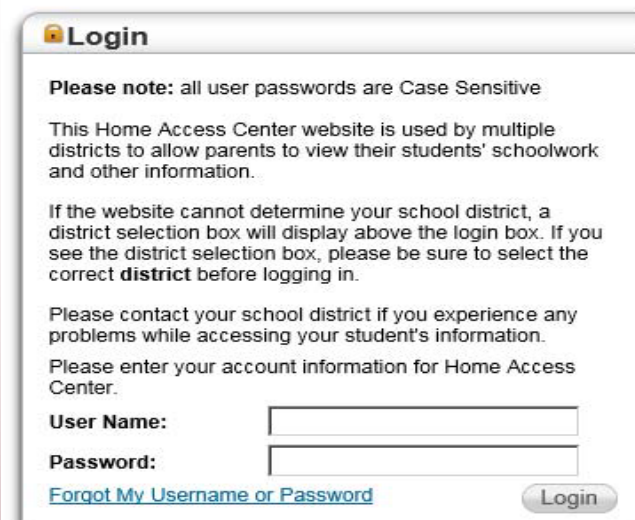
# Online Course Recommendations

## Home Access Center Questions? Email [HAC@parklandsd.org](mailto:HAC@parklandsd.org)

User names and passwords were mailed previously to the address of the student's guardian. If you are in need of your user name and password, please email [HAC@parklandsd.org](mailto:HAC@parklandsd.org). Information regarding logins will not be provided by telephone.

### Login to Home Access

1. Go to <http://pldhomeaccess.spihost.com>. Do not use a search engine such as Google or MSN to find the Home Access website.
2. The login screen opens. Log on with your user name and password.



The screenshot shows a web browser window titled "Login". The page contains the following text:

**Please note:** all user passwords are Case Sensitive

This Home Access Center website is used by multiple districts to allow parents to view their students' schoolwork and other information.

If the website cannot determine your school district, a district selection box will display above the login box. If you see the district selection box, please be sure to select the correct **district** before logging in.

Please contact your school district if you experience any problems while accessing your student's information.

Please enter your account information for Home Access Center.

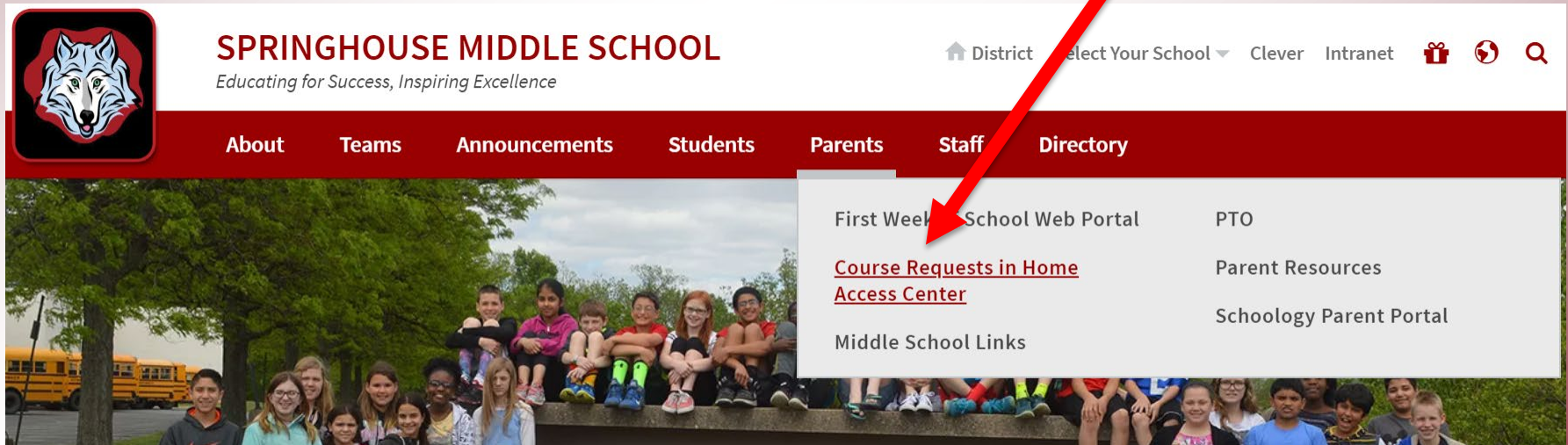
**User Name:**

**Password:**

[Forgot My Username or Password](#)

# Online Course Recommendations

**\*\*For a complete set of Course Recommendation instructions, please visit the Springhouse Middle School website at <https://sms.parklandsd.org/> Click the Parents drop-down and Select Course Requests in Home Access Center\*\***







# Performing Music



- Band, Chorus & Orchestra are offered as a graded class.
  - Meet as a class during marking periods 2 and 5.
  - Two marking periods of Performing Music will satisfy music requirement for the school year.
  - Performing music groups may be taken in combination: Band/Chorus, Orchestra/Chorus, Band/Orchestra
- \*\* Students taking either Band or Orchestra must already know how to play a band or orchestra appropriate instrument well enough to be able to participate.\*\***

## General Music



- General music is designed to introduce students to the world of music:
  - 6th grade: Instruments and the Science of Sound
  - 7th grade: American Poplar Music
  - 8th grade: Classical Music History

\*All grades of general music have both a music literacy and a performance component.

- Any student not in a Performing Music will be scheduled for General Music.
- Meets daily for one marking period.

# Seventh Grade Health Requirements

✓ **Hearing Testing**

✓ **Immunizations**

➤ **State Immunization Requirements:**

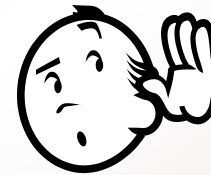
1) Tdap - tetanus, diphtheria, acellular pertussis

2) MCV - meningitis

✓ **Dental Exams**

✓ **Scoliosis Checks**

✓ **Height, Weight, Body Mass Index & Vision**





# Springhouse Middle School

Co-Curricular/Extra-Curricular Programs

“Be a part of SMS...  
Get Involved!”



# Co-Curricular Activities

## Academic

- Reading Olympics
- History Day (7<sup>th</sup> and 8<sup>th</sup> grades)
- Math Counts
- Math 24
- Science Fair (7<sup>th</sup> and 8<sup>th</sup> grades)
- Spelling Bee
- Lift & Learn
- ASAP
- Coding Clubs
- GeoBee
- Robotics Club
- PA Media & Design Competition





# Co-Curricular Activities

## Literary/Communication

- Newspaper- The *Timberwolves*
- TV Studio – *S.U.N.N. TV*
- Yearbook

## Theatre Arts

- Fall Play
- Spring Musical

## Social

- Dances
- Field Day
- Game Night
- ARP Auction

## Other Activities

Orchestra

Honors Orchestra (auditions)

Band

Jazz Band (auditions)

Chorus

Chorale (auditions)

Library Aides

Stage Crew

Student Council

# Extra-Curricular Intramural Activities

## INTRAMURAL SPORTS & ACTIVITIES:

- Sports and games played after school at Springhouse in friendly competition among Springhouse students --- just for fun.
- Activities may be open to 6th, 7th, and 8th grade students.
- Activities run one, two or three afternoons per week and transportation is provided at 4:20 PM.

There is no set schedule for intramural activities. Interested students will be asked to sign up via the morning announcements.

Needed for participation: a signed parental permission slip before the first day of participation. Students may always join an activity in session.

# Interscholastic Athletics

**INTERSCHOLASTIC ATHLETICS:** Compete after school against other middle school teams in the Eastern Pennsylvania Conference. Teams are picked on a competitive try-out basis and are open to all 7th and 8th grade students. Teams practice every day until 4:15 PM and transportation home is provided.

<b>Sport</b>	<b>Level</b>	<b>Team</b>	<b>Season</b>	<b>Signups</b>	<b>Physicals</b>
Boys Basketball	7 <sup>th</sup> and 8 <sup>th</sup> boys	SMS Team	Winter sport	October	October
Girls Basketball	7 <sup>th</sup> and 8 <sup>th</sup> girls	SMS Team	Winter sport	October	October
Cheerleading	7 <sup>th</sup> and 8 <sup>th</sup> students	Combined Team	Fall/winter	May (previous year)	June/July
Cross Country	7 <sup>th</sup> and 8 <sup>th</sup> students	Combined Team	Fall sport	May (previous year)	June/July
Dance Team	7 <sup>th</sup> and 8 <sup>th</sup> students	Combined Team	Fall/winter	May (previous year)	June/July
Field Hockey	7 <sup>th</sup> and 8 <sup>th</sup> girls	Combined Team	Fall sport	May (previous year)	June/July
Football	7 <sup>th</sup> and 8 <sup>th</sup> students	Combined Team	Fall sport	May (previous year)	June/July
Softball	7 <sup>th</sup> and 8 <sup>th</sup> girls	SMS Team	Spring sport	January	February
Girls Volleyball	7 <sup>th</sup> and 8 <sup>th</sup> girls	Combined Team	Fall sport	May (previous year)	June/July
Boys Volleyball	7 <sup>th</sup> and 8 <sup>th</sup> boys	Combined Team	Spring sport	February	February
Wrestling	7 <sup>th</sup> and 8 <sup>th</sup> students	Combined Team	Winter sport	October	October

**Students are shuttled from Springhouse to their practice location if at another location. Dates and times are provided for all sign-ups via the daily morning announcements.**

**Needed for participation: Signed parental permission form PLUS physician's examination BEFORE first practice. Physicals are provided by the Parkland School District, free of charge, if a student signs up during the preseason sign-up period.**

# **Thank you for coming**

## **Springhouse Middle School**



### **Administration**

**Dr. Michelle Minotti, Principal**  
**Mr. Jeffrey Bartman, Asst. Principal**  
**Mrs. Alison Thompson, Asst. Principal**

### **Health Room**

**Mrs. Sara Troutman**

### **Guidance**

**Mrs. Megan Bauer**  
**Mr. Michael Gross**  
**Mrs. Megan Jenkins**  
**Mrs. Allison McPeck**  
**Mr. Brian Barone, School Psychologist**